



# What You Can Expect at the Forest Reserve

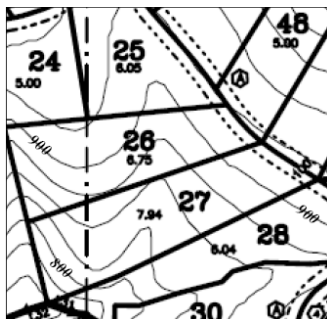
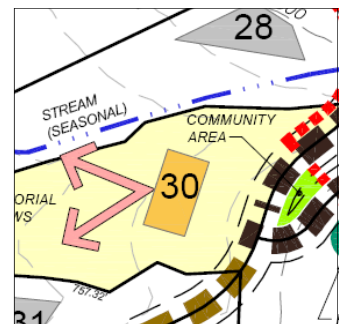


## ON-SITE PROPERTY ENHANCEMENTS

- Property corners staked & clearly marked (front corners with signage)
- Septic test dig locations marked
- Homesite paths created to provide easy walking access to potential building areas
- Potential view corridors opened to highlight potential scenic vistas

## PROPERTY SPECIFIC INFORMATION PROVIDED

- Soils report with test dig, recommended system and estimated costs for property
- Homesite analysis maps showing property attributes
- Forest management plan written by a professional forester
- Record of survey map providing legal description of the property



## COMMUNITY INFORMATION PROVIDED

- Water Assessment report detailing well depths in area along with estimated costs
- Protective covenants & current year budget for the Owners Association
- Community & topographical maps
- Map of utility locations along with provider contact information

## SUPPORT PROVIDED

- Free 3-hour session with a professional forester
- Forest Demonstration areas to learn about forest management
- Buyers Workshop seminars on topics related about forestry & building
- Free 2-year membership in the Washington Farm Forestry Association (WFFA), a small tree farmer advocacy group
- WREDCO staff assistance when needed

